



*Fall*  
*&*  
*Winter*

-----  
20  
11



THIS PAGE. *Emily Gypsy Dress*, Rose floral print. Blue floral print (p18) and Navy solid (p20). Cotton poplin. Lined. 2018. *Helena Cotton Leggings*, Rose. Navy (p15), Choc Brown (p16), Light Purple (p22). Cotton jersey. 0314.

OPPOSITE PAGE. *Fiona Drop Waist Knit Dress*, Choc Brown. Azure Blue (p9). Knit Jersey. Embroidered at skirt. 0468. *Mimi Velvet Stretch Jodphur*, Choc Brown. Navy version (p24). Cotton lycra blend velvet. Rose trim at pant hem. 0003.





THIS PAGE & OPPOSITE PAGE. *Lyla Velvet Embroidered Dress*, Navy + Red combo. Choc Brown + Rose combo (p16). This dress is also available in cotton corduroy in both color combos. Embroidered at chest and center front. 0369. *Aurelie Cord Ruffle Front Dress*, Navy. Embroidered at back shoulder. 0002. *Emily Gypsy Dress*, Navy solid. 2018. *Lily Transeasonal Party Dress*, Navy+ Red. Berry + Rose (p14), Blue floral print (p25). Cotton poplin. 0464. *Ines Velvet Biker Jacket*, Light Purple cotton velvet. Lined. 5448.





THIS PAGE & OPPOSITE PAGE. *Felicity Preppy Shirt Dress.*  
Blue floral print. Cotton poplin. 0465.





THIS PAGE. *Aurelie Cord Ruffle Front Dress*, Navy. Choc Brown (p16).  
Cotton corduroy. Embroidered at back shoulder.0002.



THIS PAGE. *Fiona Drop Waist Knit Dress*, Azure Blue. Choc Brown (p3).  
Knit Jersey. Embroidered at skirt. 0468.



THIS PAGE & OPPOSITE PAGE. *Camilla Embroidered Corduroy Coat, Red.*  
Cotton Corduroy. Lined. Embroidered at back. 0320.





THIS PAGE. *Sasha Ruffle Velvet Vest*, Navy. Embroidered at back. Choc Brown (p17). Cotton velvet. 3011. *Helena Cotton Leggings*, Navy. Rose (p 2 & 14), Choc Brown (p16), Light Purple (p22). Cotton jersey. 0314. Model's own shirt and denim skirt.

OPPOSITE PAGE. *Lily Transeasonal Party Dress*, Berry + Rose. Navy + Red (p4), Blue floral print (p25). Cotton poplin. 0464. *Helena Cotton Leggings*, Rose. Navy (p15), Choc Brown (p16), Light Purple (p22). Cotton jersey. 0314.



*Lyla Velvet Embroidered Dress*, Choc Brown + Rose combo. Navy + Red combo (p5). This dress is also available in cotton corduroy in both color combos. Embroidered at chest and center front. 0369.

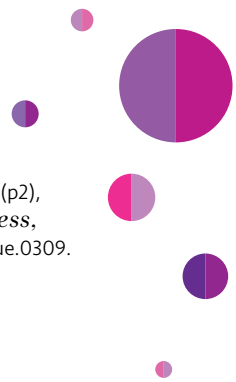
*Aurelie Cord Ruffle Front Dress*, Choc Brown. Navy (p8). Cotton corduroy. Embroidered at back shoulder.0002. *Helena Cotton Leggings*, Choc Brown. Rose (p2), Navy (p15). Light Purple (p22). Cotton jersey. 0314.



*Sasha Ruffle Velvet Vest*, Choc Brown. Embroidered at back. Navy (p15). Cotton velvet. 3011. Katie Puff Sleeve Tee, Rose. Also available in Light Purple and Red (not shown). Cotton voile and knit jersey. 0004. *Gemma Mini Cord Tiered Skirt*, Choc Brown corduroy. Rose underskirt, cotton poplin. Navy version (p26). 4648. *Helena Cotton Leggings*, Rose. Navy (p15). Light Purple (p22). Cotton jersey. 0314.

*Fiona Drop Waist Knit Dress*, Choc Brown. Azure Blue (p9). Knit Jersey. Embroidered at skirt. 0468. *Mimi Velvet Stretch Jodphur*, Choc Brown. Navy version (p24). Cotton lycra blend velvet. Rose trim at pant hem. 0003.





THIS PAGE. *Emily Gypsy Dress*, Blue floral print. Rose floral print (p2), Navy solid (p20). Cotton poplin. Lined. 2018. *Halley Cord Dress*, Berry. Navy version (p24). Cotton corduroy. Ribbon flower applique.0309.

OPPOSITE PAGE. *Penny Embroidered Peasant Dress*, Berry. Cotton corduroy. 0467.





THIS PAGE. *Emily Gypsy Dress*, Navy. Rose floral print (p2). Blue floral print (p18). Cotton poplin. Lined. 2018.

OPPOSITE PAGE. *Maya Ruffle Hem Dress*, Berry + Light Purple ruffles. Cotton poplin. Lined. 2188.

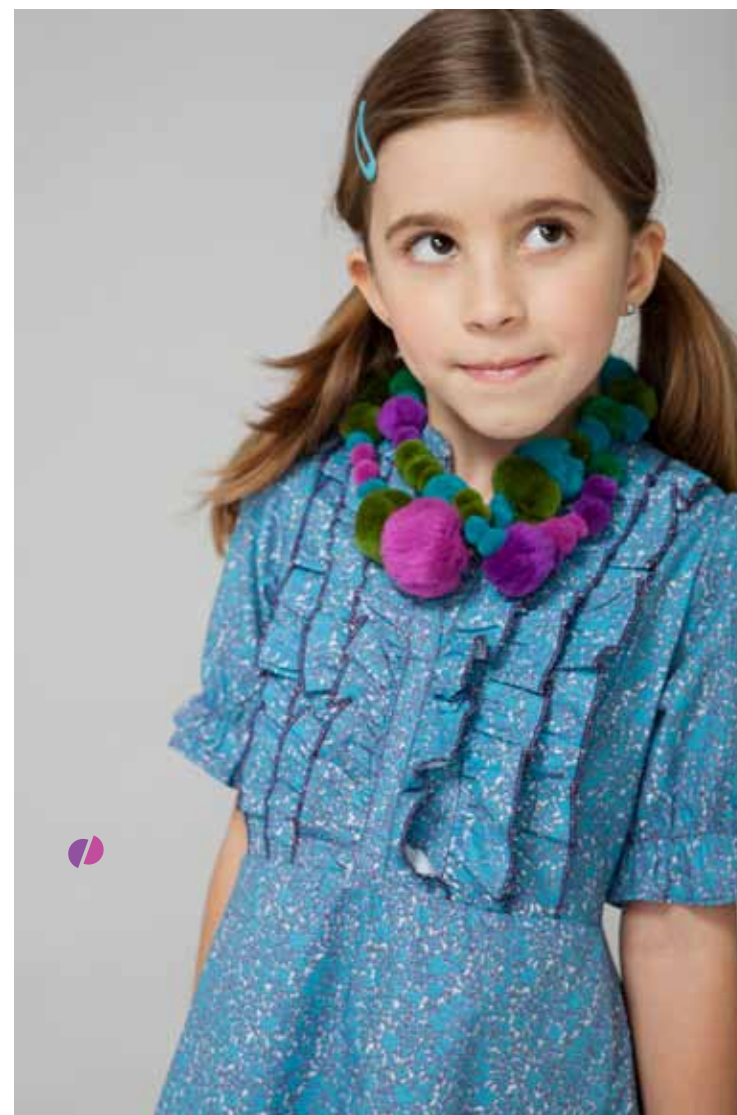




**BASICS.** *Mimi Velvet Stretch Jodphur*, Navy. Also in Choc Brown (p3). Cotton lycra blend. Contrast trim at pant hem. 0003. *Helena Cotton Leggings*, Light Purple. Navy (p15), Choc Brown (p16), Rose (p2). Cotton jersey. 0314. *Katie Puff Sleeve Tee*, Rose. Also available in Light Purple and Red (not shown). Cotton voile and knit jersey. 0004. *Emma Long Sleeve Tee* with embroidered sleeves, Rose and Light Purple shown. Also available in Choc Brown, Navy and Red (not shown). Cotton jersey. 0010.



*Halley Cord Dress*, Navy. Berry version (p18). Cotton corduroy. Ribbon flower applique. 0309. *Mimi Velvet Stretch Jodphur*, Navy. Choc Brown version (p3). Cotton lycra blend velvet. Red trim at pant hem. 0003.



*Lily Transeasonal Party Dress*, Blue floral print. Navy+ Red (p4). Berry + Rose (p14). Cotton poplin. 0464.



THIS PAGE. *Sasha Ruffle Velvet Vest*, Navy. Embroidered at back. Choc Brown (p17). Cotton velvet. 3011. Model's own tee shirt. *Gemma Mini Cord Tiered Skirt*, Navy corduroy. Red cotton poplin underskirt. Choc Brown version (p17). 4648.

OPPOSITE PAGE. A sampling of *Wati hair accessories* made exclusively by *A Finishing Touch*: suede, fabric, as well as sequin flower hairbands, silk flowers and other assorted clips and elastics that co-ordinate with our color palette.





THIS PAGE & OPPOSITE PAGE. *Martine Zip Front Hoodie Jacket*, Navy.  
Embroidered back and front. Pockets. Lined hood. Cotton brushed jersey. 0001.



**Wati Design**  
Girls' clothing  
sizes 4-12  
wati@watdesign.  
com

Tel: 650-224-7478  
Fax: 650-287-4529  
watdesign.com

**PHOTOGRAPHER**  
**Ericka McConnell**  
Photography  
erickamcconnell.com

**GRAPHIC DESIGN/  
ART DIRECTION**  
**George McCalman**  
tuffgeestudio.com

**STYLIST**  
**Danielle Gold**  
Fashion & Prop Stylist  
danielle\_gold@me.com

**HAIR & MAKE-UP**  
**Racine Christensen**  
racinechristensen.com

**HAIR ACCESSORIES**  
**A Finishing Touch**  
Please contact Wati  
or a sales representa-  
tive in your region.

**Sunglasses**  
by Alice Lando  
**Teeny Tiny Optics**  
ali@teenytiny  
optics.com  
1-888-833-6984.

Cashmere scarves  
by Shalini Blitzer  
**Shalini Design Inc.**  
Shalini\_Inc  
@yahoo.com  
1-650-575-9828

**Colombian mochilla  
bags and glass  
jewelry** imported by  
Angela Gonzalez.  
angelalagonzalez@  
gmail.com  
1-415-602-1017



**Los Angeles  
Showroom**  
Shayna Masino Sales  
Shayna Masino  
Tel: 213-689-4950  
shaynasms@aol.com

**Chicago Showroom**  
**Twinkleberry  
& Son, Inc.**  
Kristine Prugh  
Chicago, IL 60654  
Tel: 312-224-2670  
kristine@twinkle  
berryandson.com

**New England  
Showroom**  
Ellen Groustra  
Tel: 617-620-0546  
egroustra@rcn.com

**Atlanta Showroom**  
Janet Hunter Hawkins  
Tel: 404-524-8897  
hunterhawkins  
@bellsouth.net

**Mountain States  
Showroom**  
Mami & Babi  
Lisa Fentress  
Tel: 303-477-4282  
lisa@mamiandbabi.com

**Dallas Showroom**  
Katwalk Kids  
Karen Jacoby  
& Lisa Sabin  
Tel: 888-KATWALK or  
214-741-9255  
katwalkkids@att.net

